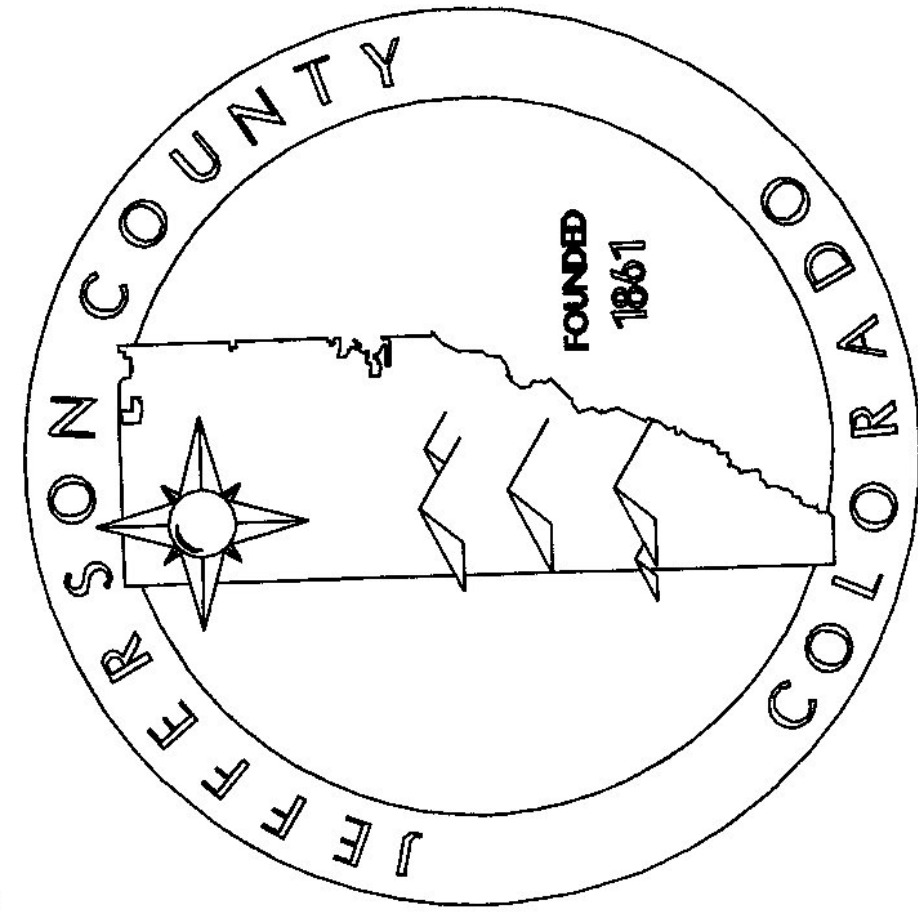
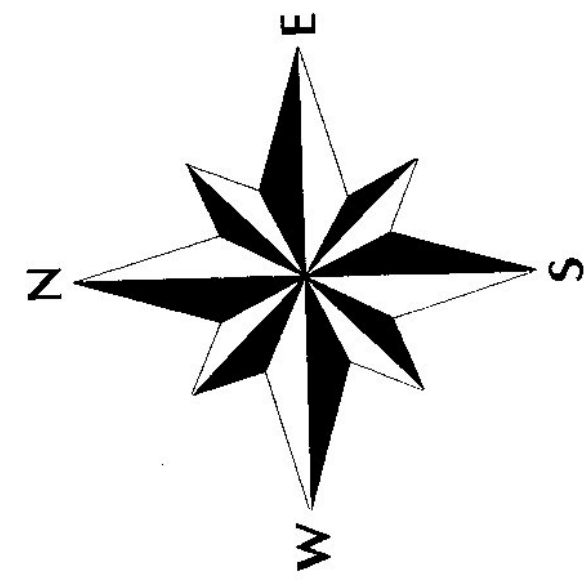


MAP 61-302A



Jim Everson
Assessor



(Initially plotted at 1" = 100', or 1:1200)

R7W	R7W	R7W	R7W	R7W	R7W	R7W	R7W	R7W	R7W	R7W	R7W	R7W	R7W	R7W	R7W	R7W	R7W	R7W	R7W	R7W																						
22	21	20	29	T2S	32	31	30	39	T3S	42	41	40	49	T4S	52	51	50	59	T5S	62	61	60	69	T6S	72	71	70	79	T7S	82	81	80	89	T8S	92	91	90	99	T9S	02	01	T10S

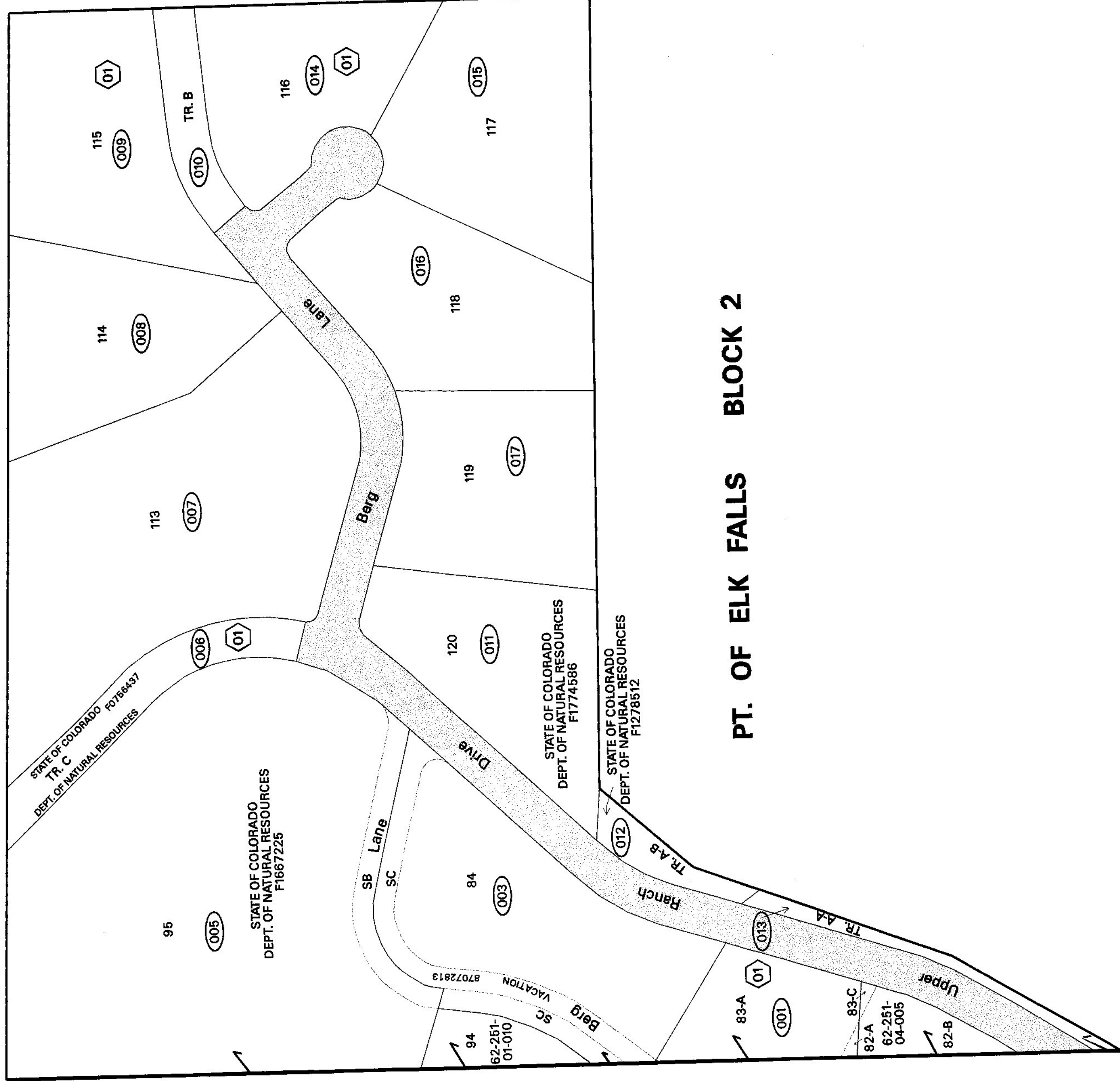
SECTION INDEX			
6	5	4	3
7	8	9	10
18	17	16	15
19	20	21	22
30	29	28	27
31	32	33	34
35	36		

QUARTER SECTION			
1	NE		
2	NW		
3	SW	4	
		SE	

COUNTY INDEX
4-Digit Township Code: 2223

DISCLAIMER
Caution: This map is for assessment purposes only. It is not necessarily accurate by surveying standards. **DO NOT USE FOR LEGAL CONVEYANCE.** Subsequent editions with updated information will be published on a continual basis. Therefore, the information contained on this map may be modified or altered.

KEY	
	Section Lines
	Tie Bar Lines
	Subdivision Lines
	Quarter Section/Tie Bar Lines
	Township Boundaries
	County Boundaries
	All Others
	Right of Way, Water & Rail Road (Areas without parcel numbers)
	Metes & Bounds Related (Block numbers 99 & 00)



PT. OF ELK FALLS BLOCK 2

This map was last updated on Wednesday September 10, 2003 at 3:01 PM.
Projection Information System
State Plane Coordinate System
Colorado Central Zone (3476)
North American Datum 1983 (NAD83)
CRS1980 Spheroid, Units Feet
(marginalla updated Wednesday December 13, 2006 at 6:40 AM)